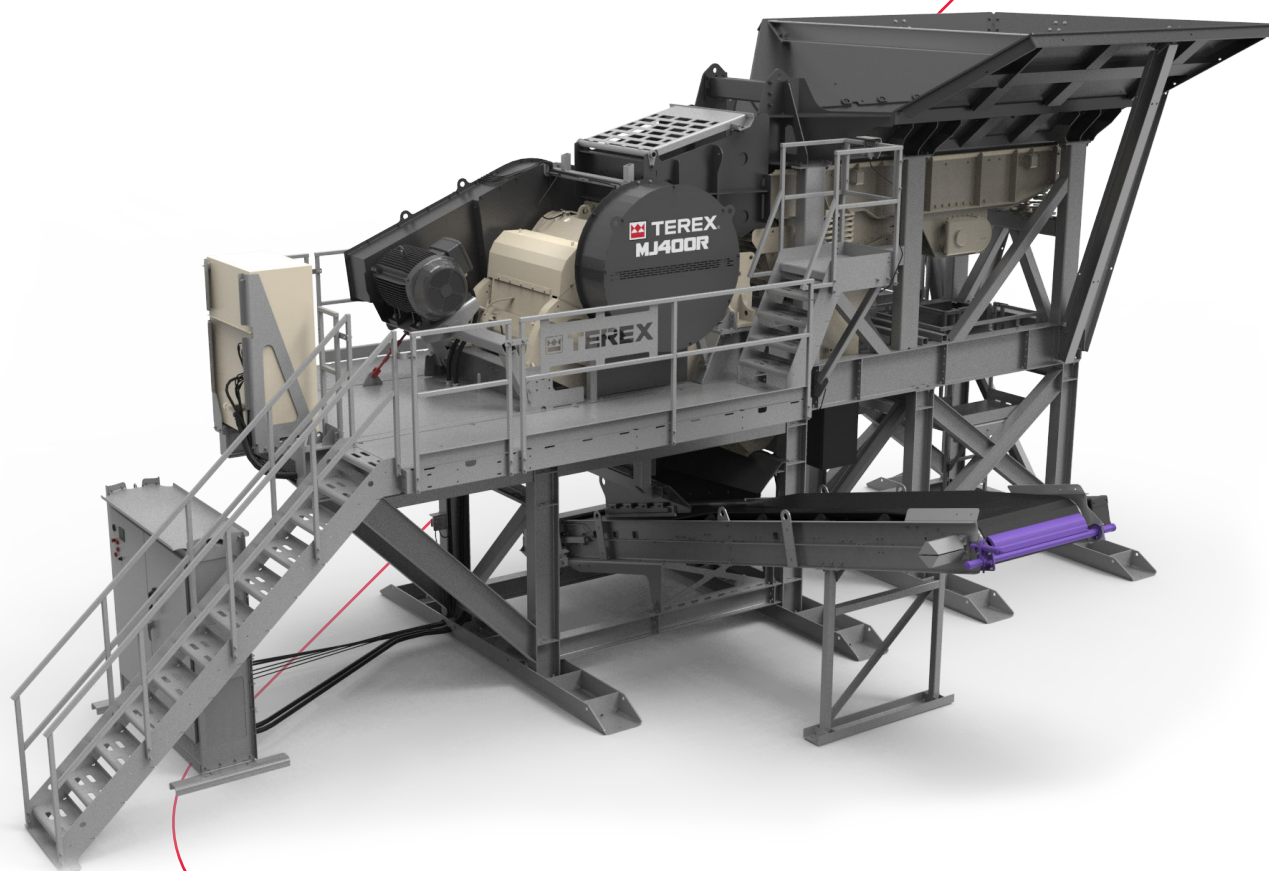


CEDARAPIDS®
A TEREX BRAND

Modular Plants

MJ400R
Jaw Module



A world working better™

 **TEREX®** MPS

Cedarapids® Modular Plants

MJ400R Jaw Module

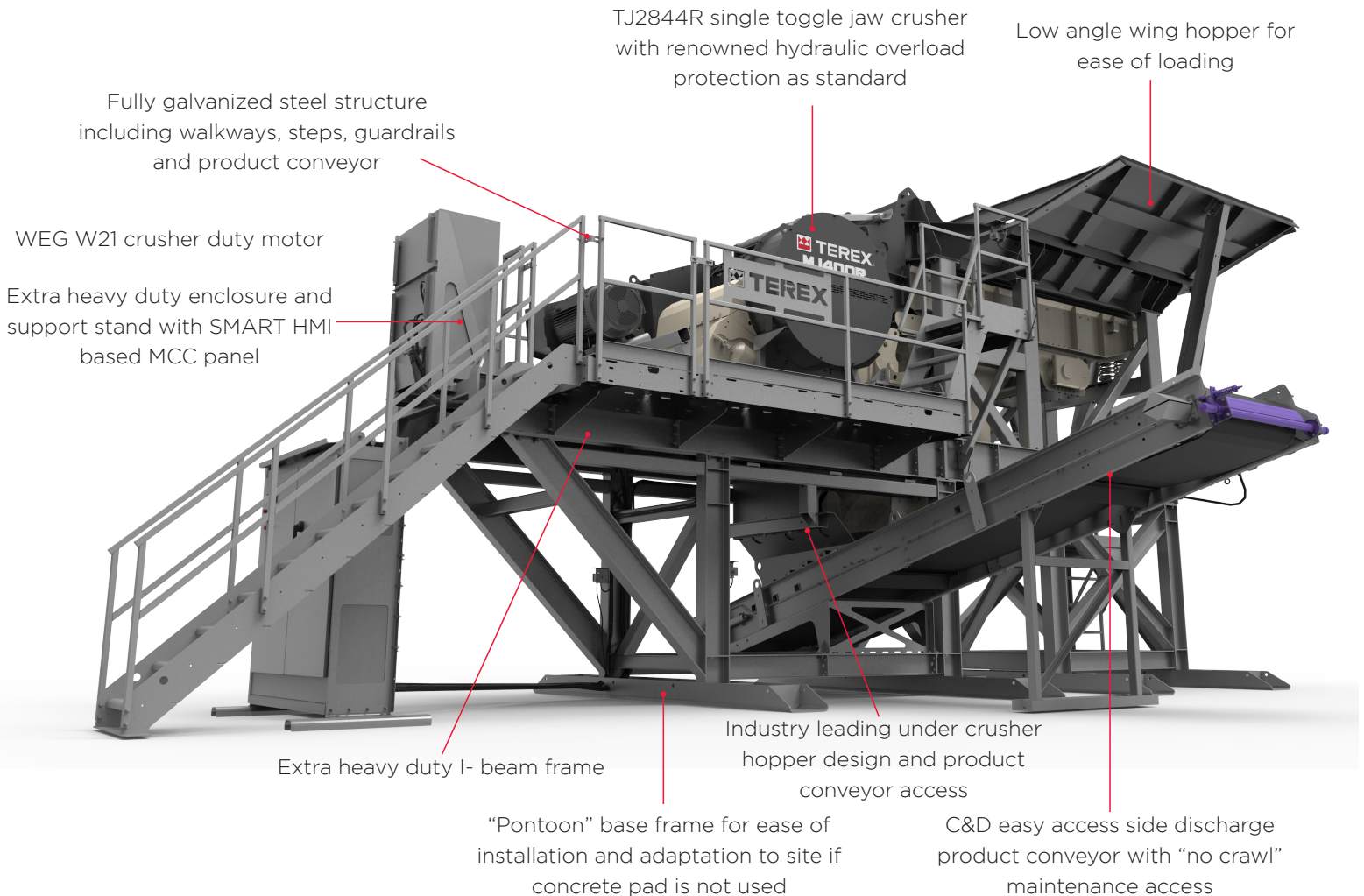
The MJ400R jaw module features the TJ2844R single toggle jaw crusher with renowned hydraulic overload protection as standard. It has a fully galvanized steel structure including walkways, steps, guardrails and product conveyor and is CE compliant.

This product is ideal for C & D recycling applications as well as quarries and mines and integrates well with established systems or as an independent unit.

Standard Features

Jaw Crusher

- TJ2844R chamber with standard Super Tooth liner profile
- 1100mm (44") x 700mm (28") jaw chamber pre mounted on sub frame assembly with motor, belts, and drive guard
- Fabricated main frame with bolt on bearing cartridges
- Direct electrically driven jaw crusher via belt system
- Manual hydraulically assisted closed side setting via shims
- Hydraulic overload protection
- Wedge & through bolt liner retention system on the fixed & the swing liner
- CSS opening range - 50mm (2") to 125mm (5")
- 110kW (150hp) WEG crusher duty motor 380 - 415 volts 3-phase 50Hz



Shown with optional hopper wing extensions and optional switchgear panel.

Side conveyor design allows rebar to pass easily away from under the plant

Module Structure

- Bolt together on-site, quick setup time with basic tools
- One-piece crusher feed chute with plug welded AR liners and chamber guard
- Fines bypass “tool less” 2-position chute discharges to product conveyor or optional third party fines conveyor
- Galvanized and painted steel structure with walkways, steps, platforms, and guard rails
- Pre-wired “plug and play” design, minimal on-site wiring
- Heavy duty ground mounted electrical control panel and plant wiring giving manual/ automatic control of jaw module operation
- Emergency stop stations
- Observation platform
- CE compliant module structure and components

Vibrating Grizzly Feeder

- Spring mounted stepped vibrating pan and grizzly feeder
- Vibrating unit: twin heavy-duty cast eccentric shafts running in spherical roller bearings
- Wear resistant side and floor liner plates
- V-belt drive, 15kW (20hp) motor with guard
- Length: 4.36m (14’); feeder width: 1.06m (42”)
- Total stepped grizzly length: 2.12m (7’)
- Two replaceable stepped cartridge grizzlies 75mm (3”) nominal aperture tapered
- Under-screen: screen mesh standard

Discharger Conveyor

- Side Discharge: standard non-drive side
- 1050mm wide (42”) “Toughflex” EPP630 (360PIW) 2-ply belt
- 11kW (15 hp) electric drive motor
- Impact bars at feed point & AR liners at crusher feed point
- Belt scraper at head drum & skirted at hopper feed area
- Slide-back under crusher hopper discharge unit to remove rebar

Hopper

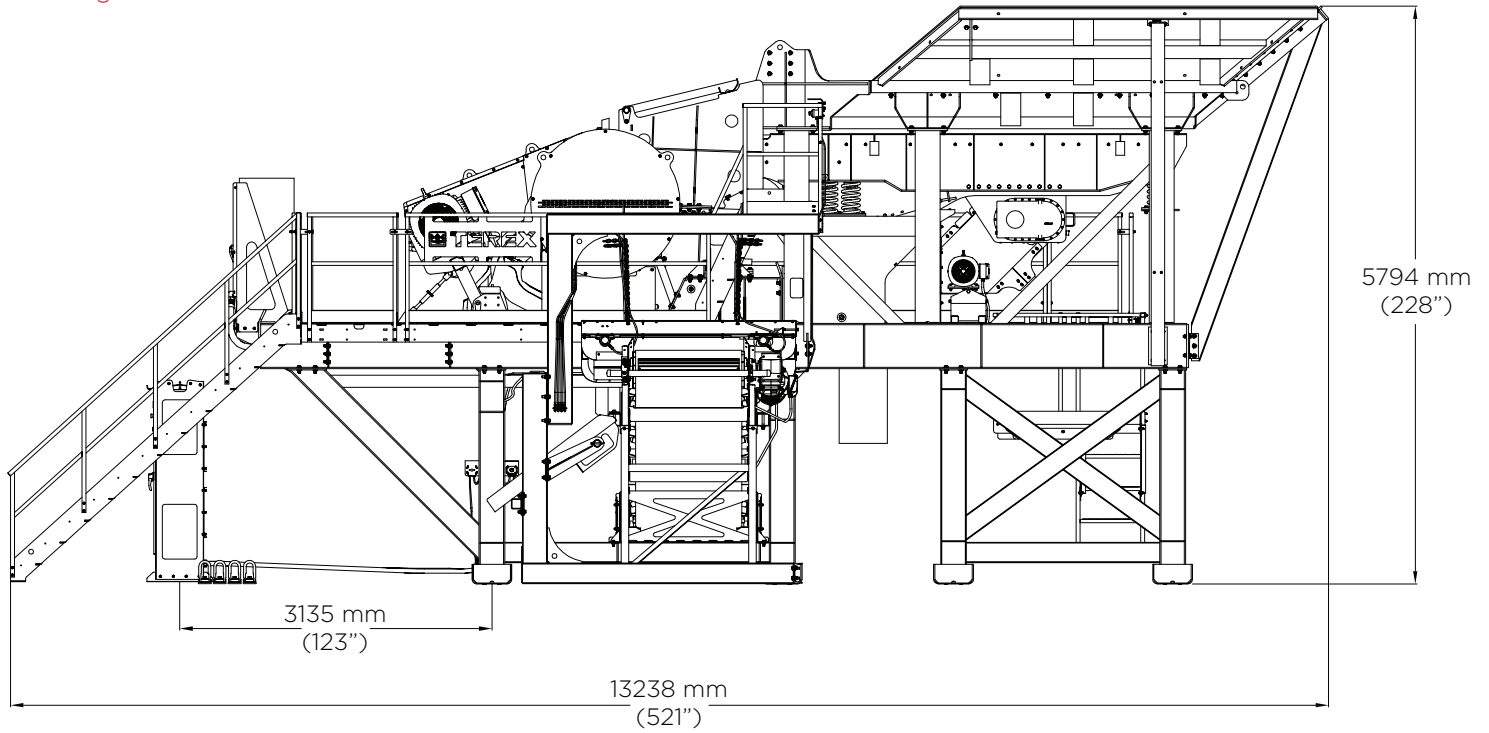
- Hopper body 20mm (3/4”) AR 400 construction with reinforcing ribs: 3.05m³ (4 yd³) standard hopper capacity

Specifications	Imperial	Metric
Motor Size	150 hp	110 kW
Feed Opening	28” x 44”	700 mm x 1100 mm
Crusher Weight (dry weight)	36,000 lbs	16,300 kg
Setting Range (pending application)	2”-6”	50 mm to 150 mm
Capacity	127 - 281 stph	115 - 255 mtph
Standard Adjustment	Shim hydraulic assist with hydraulic overload release	
Frame Style	Welded	
Lubrication System	Greased	

Optional equipment

- Extended product conveyor dual drive option for feeding modular plant (contact factory for details)
- 3 piece AR400 construction wing hopper extensions increasing hopper capacity to approx. 8.41m³ (11 yd³)
- Twin pole magnet and off plant support stand kit
- Bulkhead
- Deduct of modular switchgear panel and wiring
- Switchgear panel

Drawing



Drawing shown with optional hopper wing.

www.terexmps.com
mpsmarketing@terex.com

Product specifications and prices are subject to change without notice or obligation. The photographs and/or drawings in this document are for illustrative purposes only. Refer to the appropriate Operator's Manual for instructions on the proper use of this equipment.

Failure to follow the appropriate Operator's Manual when using our equipment or failure to act responsibly may result in serious injury or death.

The only warranty applicable to our equipment is the standard written warranty applicable to the particular product and sale, and Terex makes no other warranty, express or implied. Terex, the Terex Crown design, Cedarapids, Canica, Simplicity, Jaques, El-Jay and Rollercone are trademarks of Terex Corporation or its subsidiaries. All rights are reserved. © August 2020

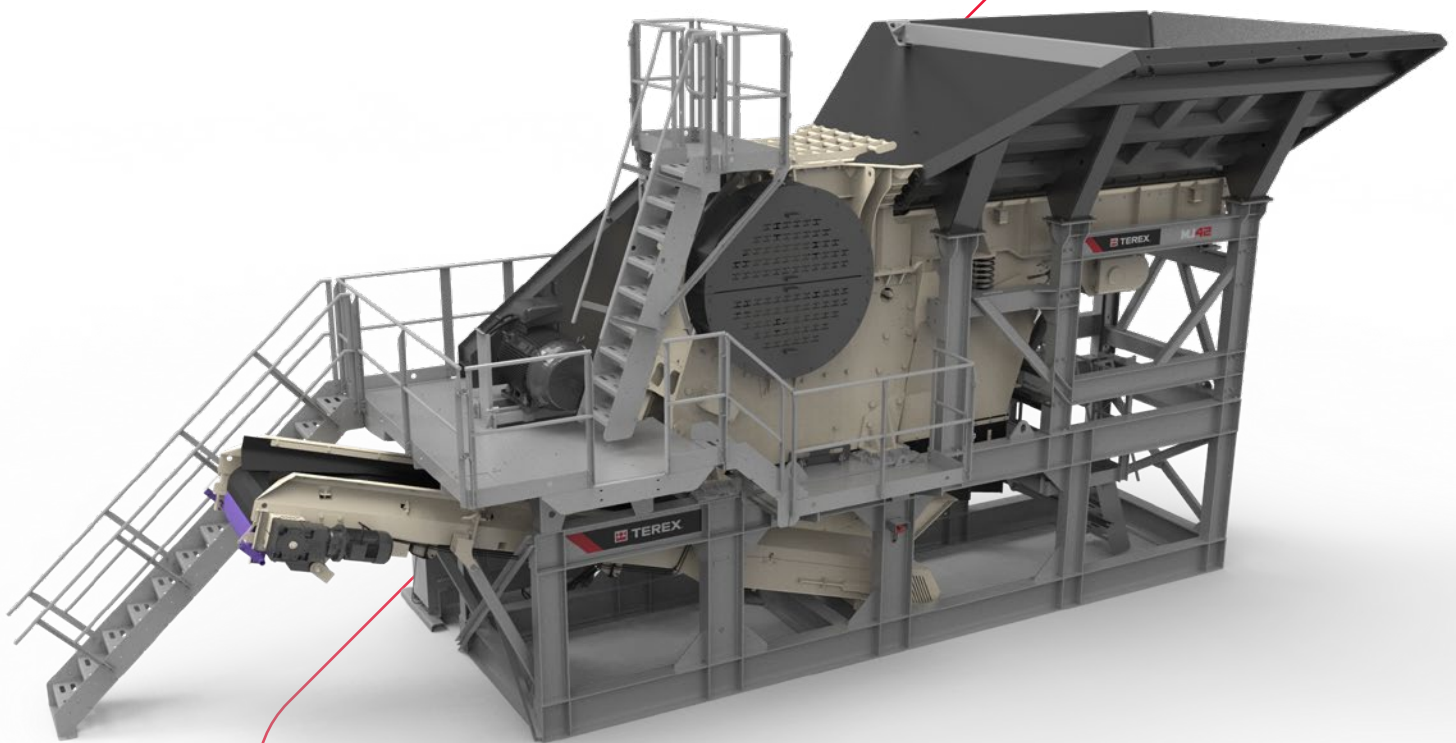
CEDARAPIDS®

A TEREX BRAND

Modular Plants

MJ42

Jaw Module



A world working better™

 **TEREX**® MPS

Cedarapids® Modular Plants

MJ42 Jaw Module

The Cedarapids® MJ42 modular jaw crusher features the rugged JW42 jaw for high production. Its hydraulically actuated wedge system allows closed-side settings to be made quickly and easily.

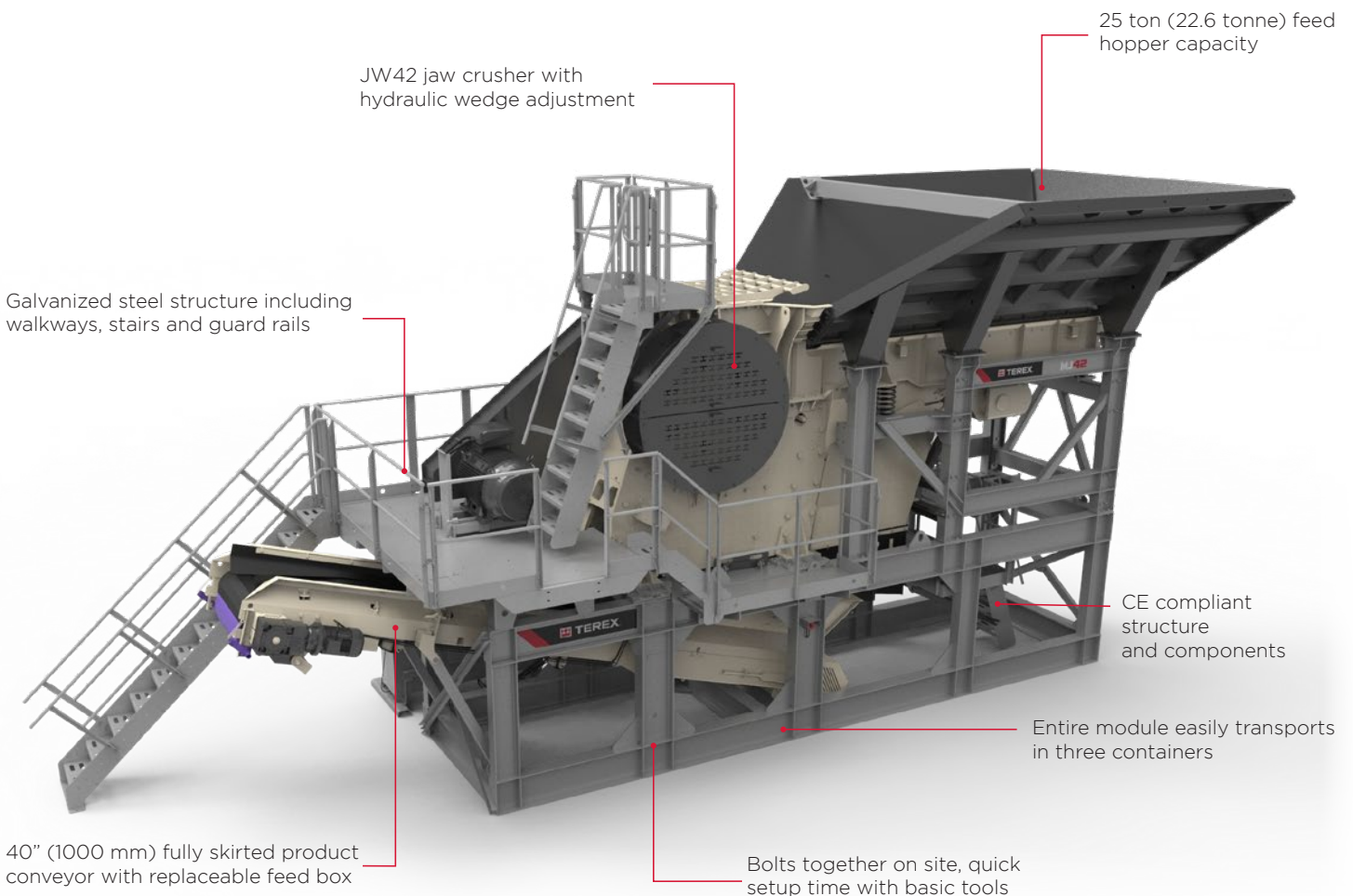
Standard Features

Module Structure

- Bolts together on-site, quick setup time with basic tools
- Pre-wired “plug and play” design, minimal on-site wiring
- Robust weather-protected control panel with user-friendly controls
- Galvanized steel structure including walkways, stairs, and guard rails
- CE compliant module structure and components
- Systematically packed in shipping containers for quick site setup and easy transport

Jaw Crusher

- Cedarapids JW42 jaw crusher
- Hydraulic wedge jaw closed side setting adjustment
- Quick change jaw die wedge system
- Robust jaw frame design
- Large diameter, forged main shaft



Hopper

- Three-piece hopper
- Hopper length: 17'4" (5.3m)
- Hopper width: 12' (3.98m)
- Hopper capacity: 25 tons (22.6 tonnes)
- Hopper body: 5/8" (15mm) thick wear resistant steel plate, mild steel reinforcing ribs

Vibrating Grizzly Feeder

- Spring mounted vibrating pan and grizzly feeder
- Vibrating unit: twin heavy-duty cast eccentric shafts running in spherical roller bearings, gear coupled at drive end
- V-belt drive, 20 hp (15kW) motor with guard
- Feeder length: 14'1" (4.3m); feeder width: 3'6" (1.06m)
- Grizzly length: 7' (2.12m); two replaceable 3'6" (1.06m) stepped cartridge grizzlies, 3" (75mm) nominal aperture, self cleaning
- Under-screen: rubber blanking mat; wire mesh is optional

Plant Chute-Work

- Three-piece crusher feed chute
- Grizzly fines/bypass 2-way chute discharges to product conveyor or optional fines conveyor when fitted; hand operated flap door directs grizzly fines

Discharge Conveyor

- 40" (1000mm) 3-ply belt with 15 hp (11kW) electric drive motor
- Impact bars at feed point
- Abrasion resistant liners at crusher feed point
- High spec scraper at head drum
- Skirted full length

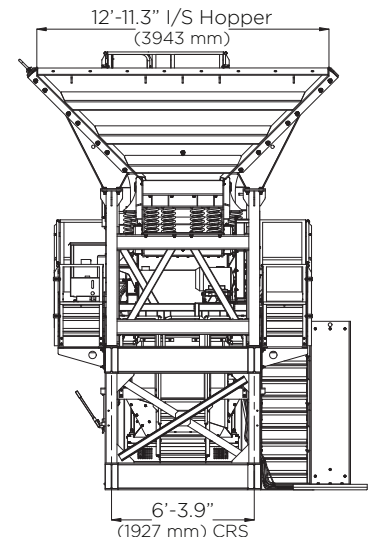
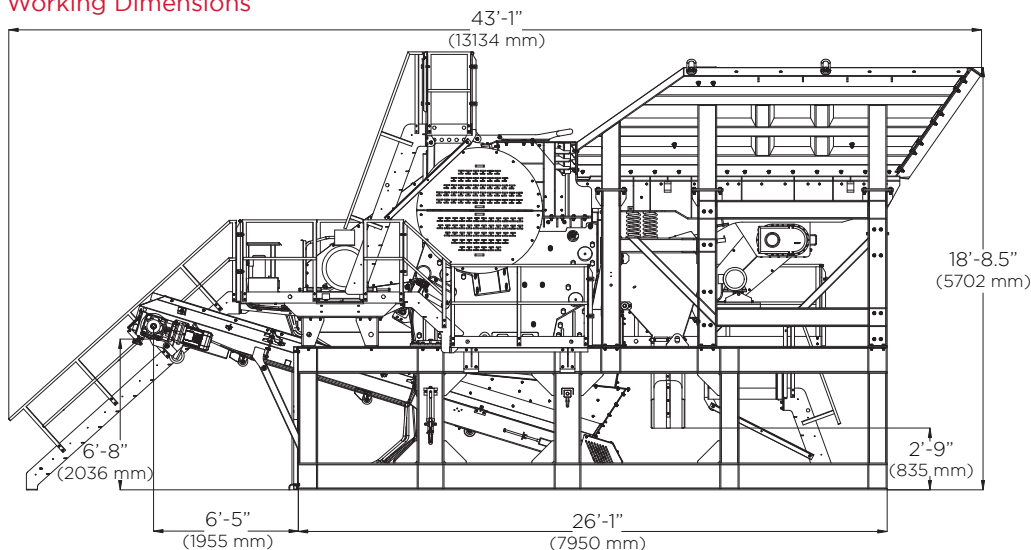
Optional Equipment

- Hydraulic power unit for push button CSS adjustment

Jaw Specifications

Motor Size	150 hp	110 kW
Feed Opening	30" x 42"	762 x 1070 mm
Crusher Weight	38,130 lbs	17,300 kg
Setting Range	2" - 6.5"	50 - 165 mm
Capacity	150 - 475 TPH	135 - 430 MTPH
Standard Adjustment	Hydraulic Wedge	
Frame Style	Bolted/Cast	
Lubrication System	Grease	

Working Dimensions



www.terexmps.com

August 2021. Product specifications and prices are subject to change without notice or obligation. The photographs and/or drawings in this document are for illustrative purposes only. Refer to the appropriate Operator's Manual for instructions on the proper use of this equipment.

Failure to follow the appropriate Operator's Manual when using our equipment or failure to act responsibly may result in serious injury or death.

The only warranty applicable to our equipment is the standard written warranty applicable to the particular product and sale, and Terex makes no other warranty, express or implied. Terex, the Terex Crown design, Cedarapids, Canica, Simplicity, Jaques, El-Jay and Rollercone are trademarks of Terex Corporation or its subsidiaries. All rights are reserved. © 2021



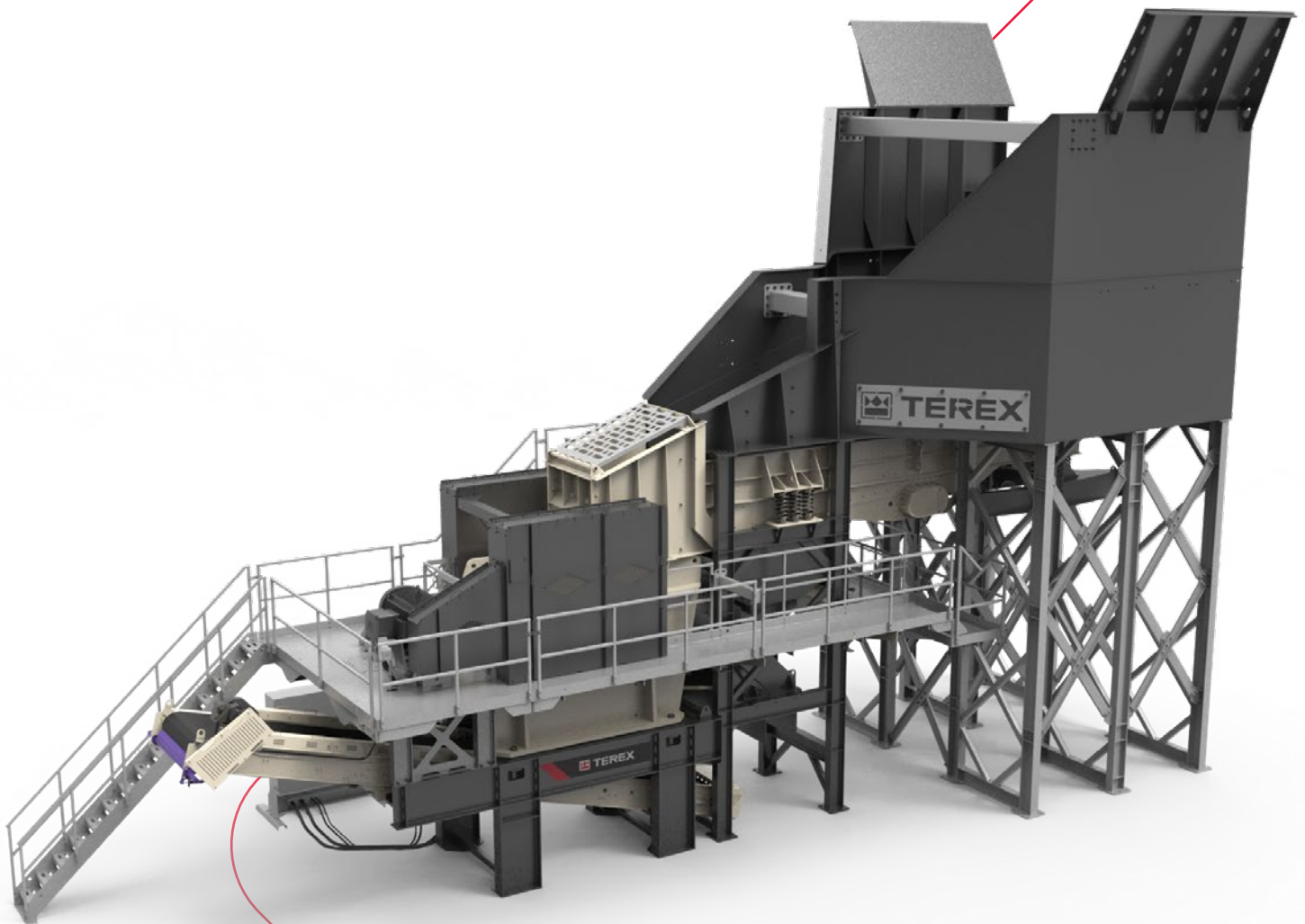
CEDARAPIDS®

A TEREX BRAND

Modular Plants

MJ47

Jaw Module



A world working better™

 **TEREX**® MPS

Cedarapids® Modular Plants

MJ47 Jaw Module

The Cedarapids® MJ47 modular jaw crusher is designed for large quarries or contractors that want a stationary type design without the complexity of a normal stick-built plant. The MJ47 module features the robust, 36" x 48" (914mm x 1219mm) ST47 jaw crusher. Other key features include the 51" x 24' (1.3 m x 7.3 m) heavy-duty double-deck vibrating grizzly feeder and a large capacity truck dump hopper.

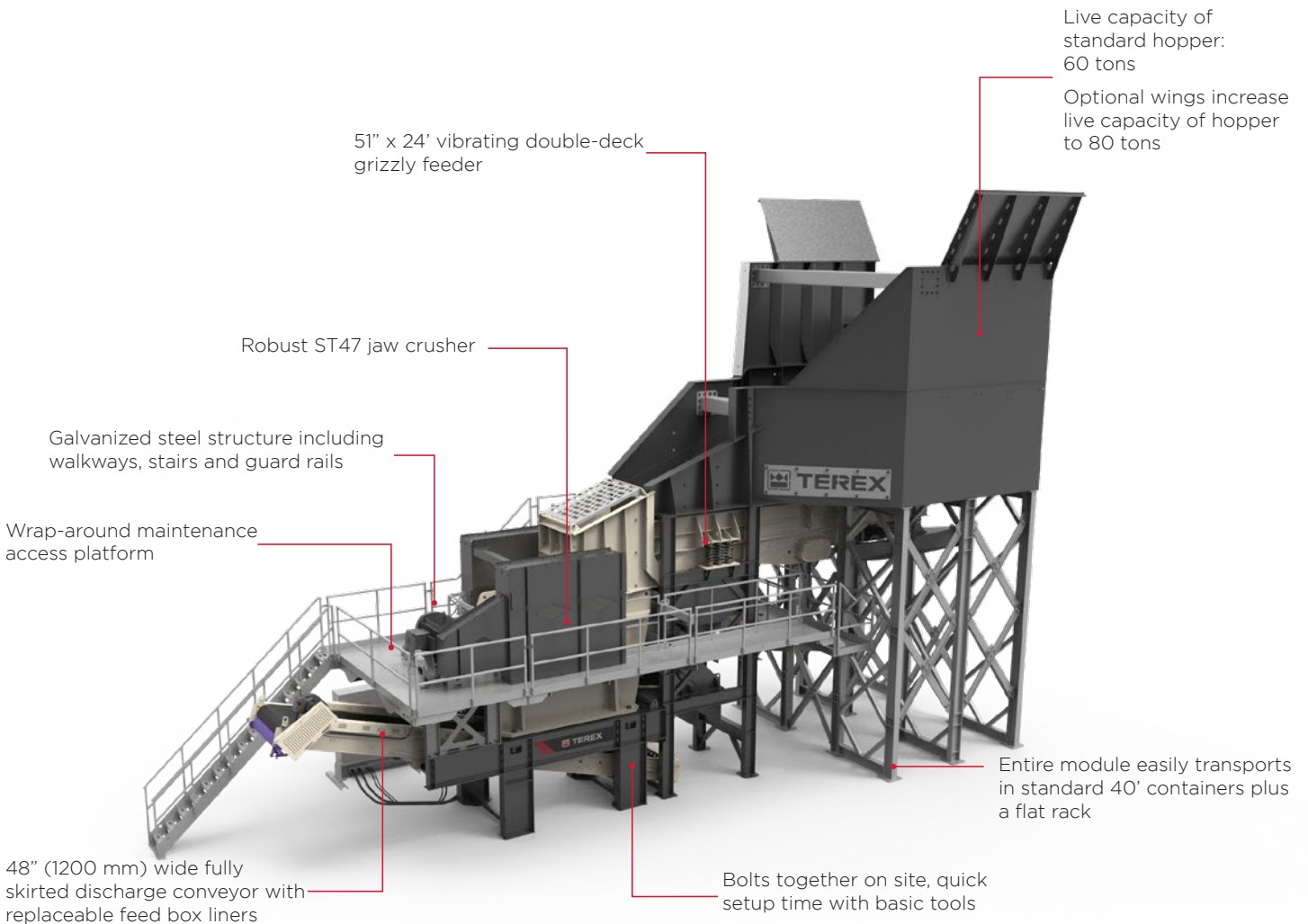
Standard Features

Module Structure

- Bolts together on-site, quick setup time with basic tools
- Robust weather-protected control panel with user-friendly controls
- Galvanized steel structure including walkways, stairs, and guard rails
- Systematically packed in shipping containers for quick site setup and easy transport

Jaw Crusher

- ST47 jaw crusher 36" x 48" (914mm x 1219mm)
- V-belt drive, 200 hp (150kW) motor with guard
- Robust one-piece jaw frame design
- Large diameter, forged main shaft
- Single, rocking-end toggle requires no lubrication



Unit shown with optional hopper wings, hopper extension, and electrical switchgear panel.

Truck Dump Hopper

- Rock box design with 5/8" (15mm) thick hopper; 3/4" (20mm) liner along wear edge of hopper
- Hopper width: 16'7" (5047mm)
- Live capacity of hopper: 60 tons (54.4 tonnes)

Vibrating Grizzly Feeder

- 51" x 24' (1.3m x 7.3m) OFC120A vibrating double-deck grizzly feeder
- Independently mounted pivot-type motor base
- V-belt drive, 50 hp (37kW) motor and guarding
- 1/2" (12.7mm) wear resistant side and floor liner plates
- 51" (1.3m) x 14' (4.3m) pan feeder
- Stepped grizzly length: 10' (3.04m); two 5' (1.5m) sections with adjustable openings

Plant Chute-Work

- Grizzly fines/bypass 2-way chute discharges to product conveyor or to off-plant fines conveyor

Discharge Conveyor

- 48" x 26' (1200mm x 8m) conveyor with 3-ply belt
- 20 hp (15kW) electric drive motor
- Impact bars at feed point
- High spec scraper at head drum
- Skirted full length

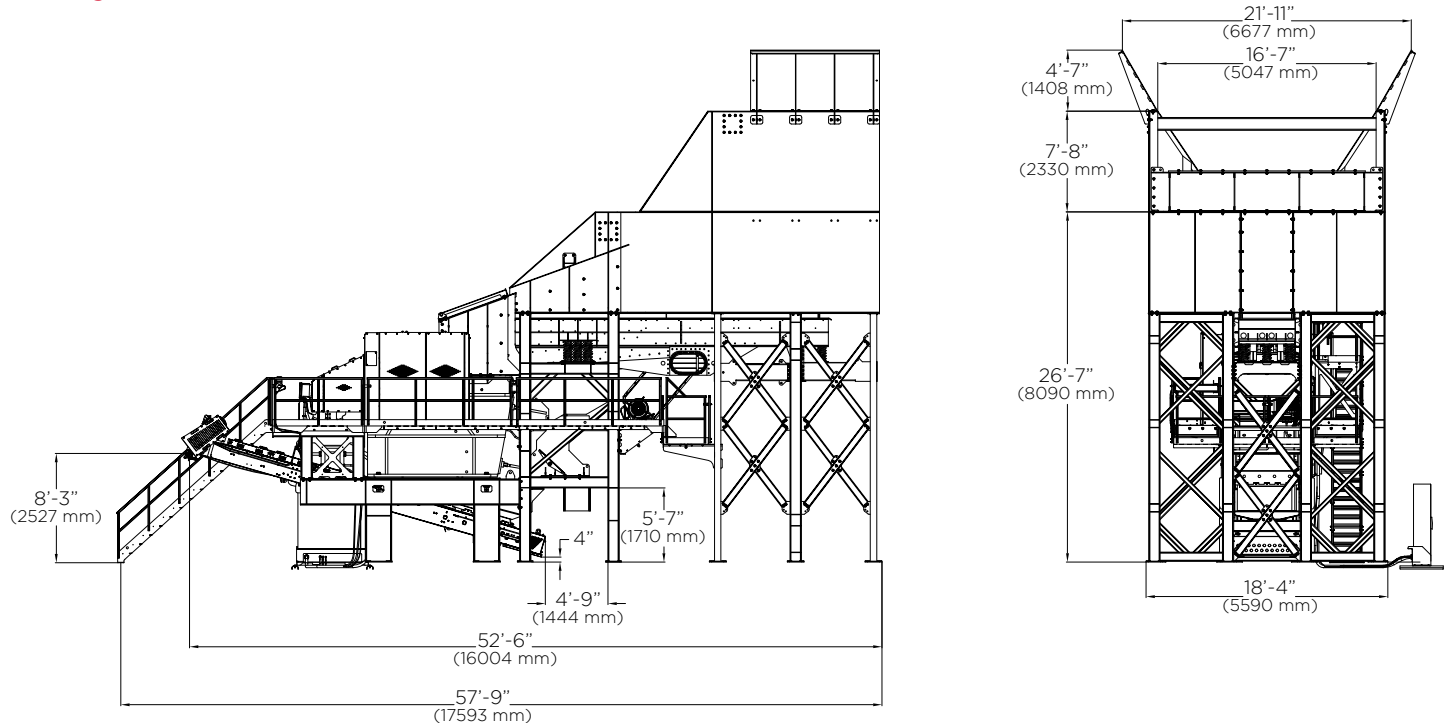
Jaw Specifications

Motor Size	200 hp	150 kW
Feed Opening	36" x 48"	914 x 1219 mm
Crusher Weight	81,550 lb	37,068 kg
Setting Range	4" - 9"	100 - 225 mm
Capacity	210 - 670 TPH	190 - 610 MTPH
Standard Adjustment	Shim	
Frame Style	Welded	
Lubrication System	Grease	

Optional Equipment

- Hopper wings
- Hopper extension
- Extended length discharge conveyor
- Rock breaker structure and walkways to module
- Electrical switchgear panel

Working Dimensions



Unit shown with optional hopper wings, hopper extension, and electrical switchgear panel.

www.terexmps.com

November 2020. Product specifications and prices are subject to change without notice or obligation. The photographs and/or drawings in this document are for illustrative purposes only. Refer to the appropriate Operator's Manual for instructions on the proper use of this equipment.

Failure to follow the appropriate Operator's Manual when using our equipment or failure to act responsibly may result in serious injury or death.

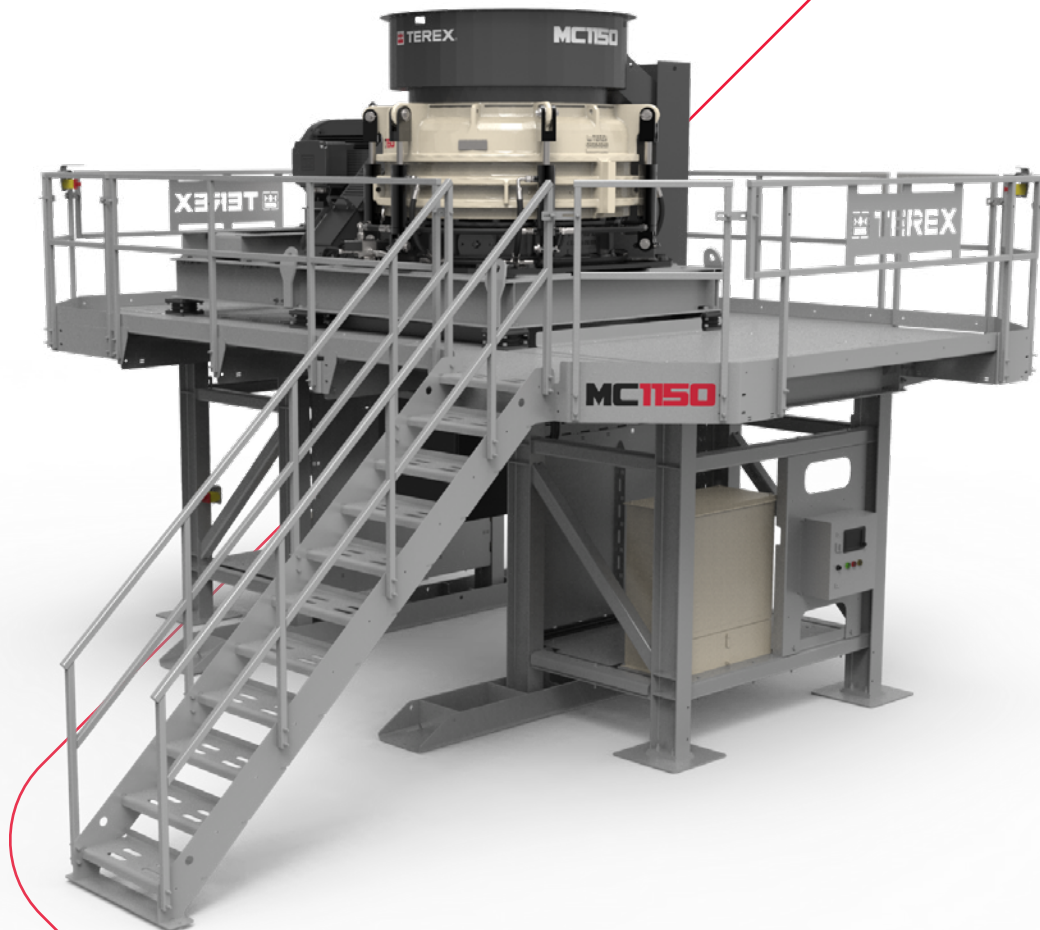
The only warranty applicable to our equipment is the standard written warranty applicable to the particular product and sale, and Terex makes no other warranty, express or implied. Terex, the Terex Crown design, Cedarapids, Canica, Simplicity, Jaques, El-Jay and Rollercone are trademarks of Terex Corporation or its subsidiaries. All rights are reserved. © 2020



CEDARAPIDS®
A TEREX BRAND

Modular Plants

MC1150
Cone Module



A world working better™

 **TEREX®** MPS

Cedarapids® Modular Plants

MC1150 Cone Module

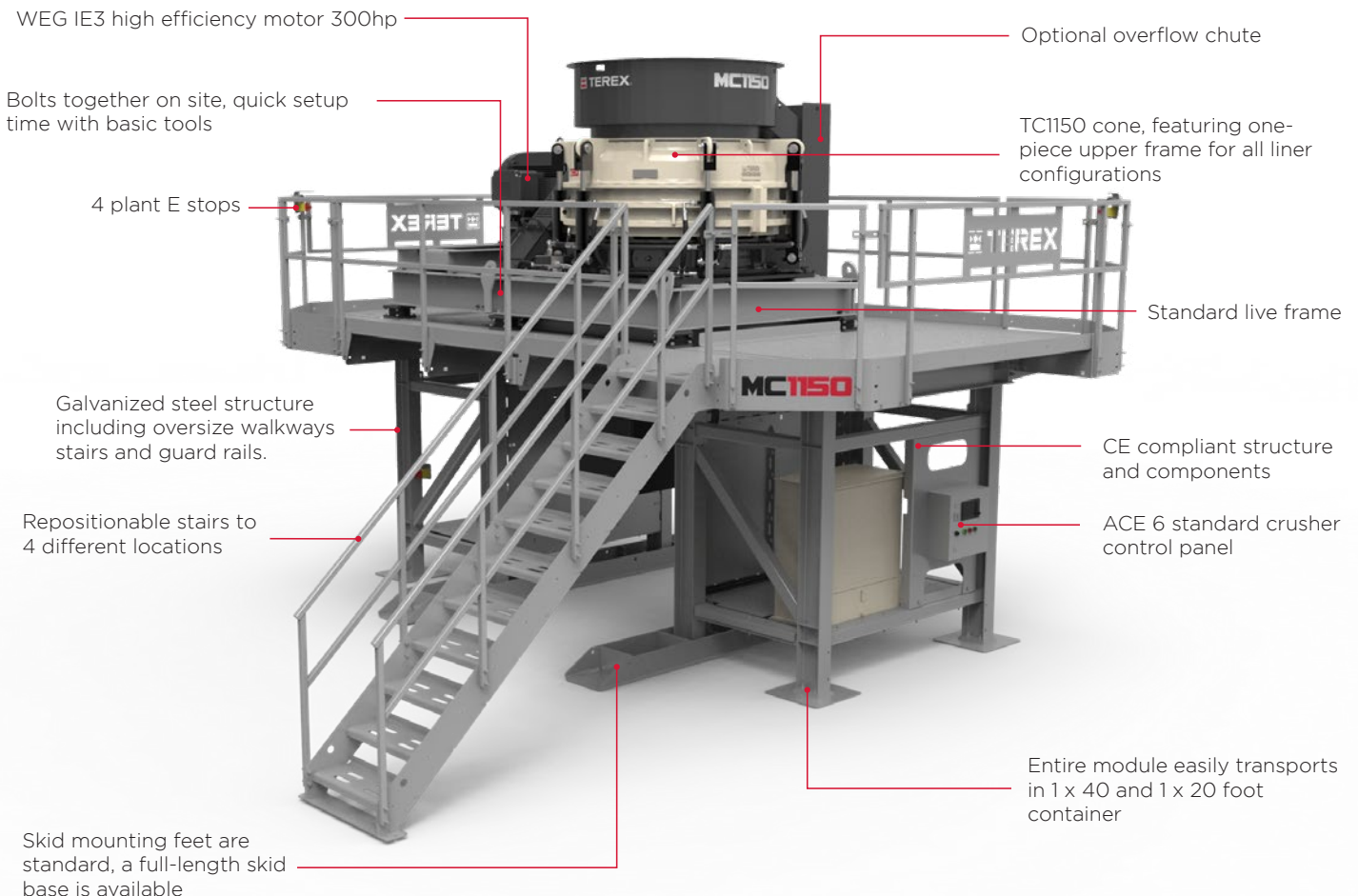
Designed around our proven, high-performance TC Series cones, our MC1150 with TC1150 cone crusher offers a nominal cone head diameter of 45"(1150 mm). It features a one-piece upper frame for all liner configurations, a no-hit concave and new mantle liner retention systems. Other enhancements include greater tramp clearance and increased clamp hold down pressure. Options include an anti-spin device and an upgraded platform offering wider walkways plus easier maintenance access.

Key Features

- Fast set-up time
- Ease of operation
- On-site assembly with minimal wiring
- Integrates with existing plant configuration
- All electric
- Compact – can be transported in containers and by road
- Robust, weather-protected panels with user-friendly controls
- Galvanized steel structures including walkways, stairs and guard rails
- Extra heavy-duty I-beam frames
- CE-compliant modules, structures and components
- Universal Platform

Controls

- Manual/Automatic one touch startup with start sequencing
- Flexibility to remove standard base cone control panel ACE6 and option to add switchgear panel
- Eriez Metal detector kit



Commonality

- Standard live frame and drive kit with Terex MPS Static/Portable
- Standard base cone controls “ACE6”
- Flexibility to interchange TC1150 with standard TC1000 & TC1300 Cone crusher and components
- Ability to Plug & Play with standard TC components & parts where practical

Durability

- Fully galvanized structure
- All electric
- Heavy Duty Nema Type 12 / IEC60529 Control Panel (Hoffman style)
- Rock Box design discharge chute

Set Up

- Easy assemble and disassemble
- Pre-assembled sections to enable quick set up time and as few lifts as possible from container
- Pre-wired

Transport

- 1 x 40' Standard Open Top Container
+ 1 x 20' Open Top Container for Cone

Optional Equipment

- Overflow chute
- Electrical switch gear
- Off plant conveyor starter kit
- Ultrasonic level control
- Operator working light kit
- Cone feed camera kit

Cone Specification



Approximate Component Weights

Whole Crusher Dry Weight	14400 kg	31360 lb
Upper Frame Assembly	4861 kg	10717 lb
Cone Head Assembly	1770 kg	3902 kg
Eccentric Assembly	1511 kg	3331 lb
Countershaft Assembly	237 kg	522 lb
Main Frame Assembly	5356 kg	11808 lb
Mantle Liner	610 kg	1345 lb
Concave Medium Course	553 kg	1219 lb
Concave Extra Course	524 kg	1155 lb
Concave Fine	576 kg	1270 lb

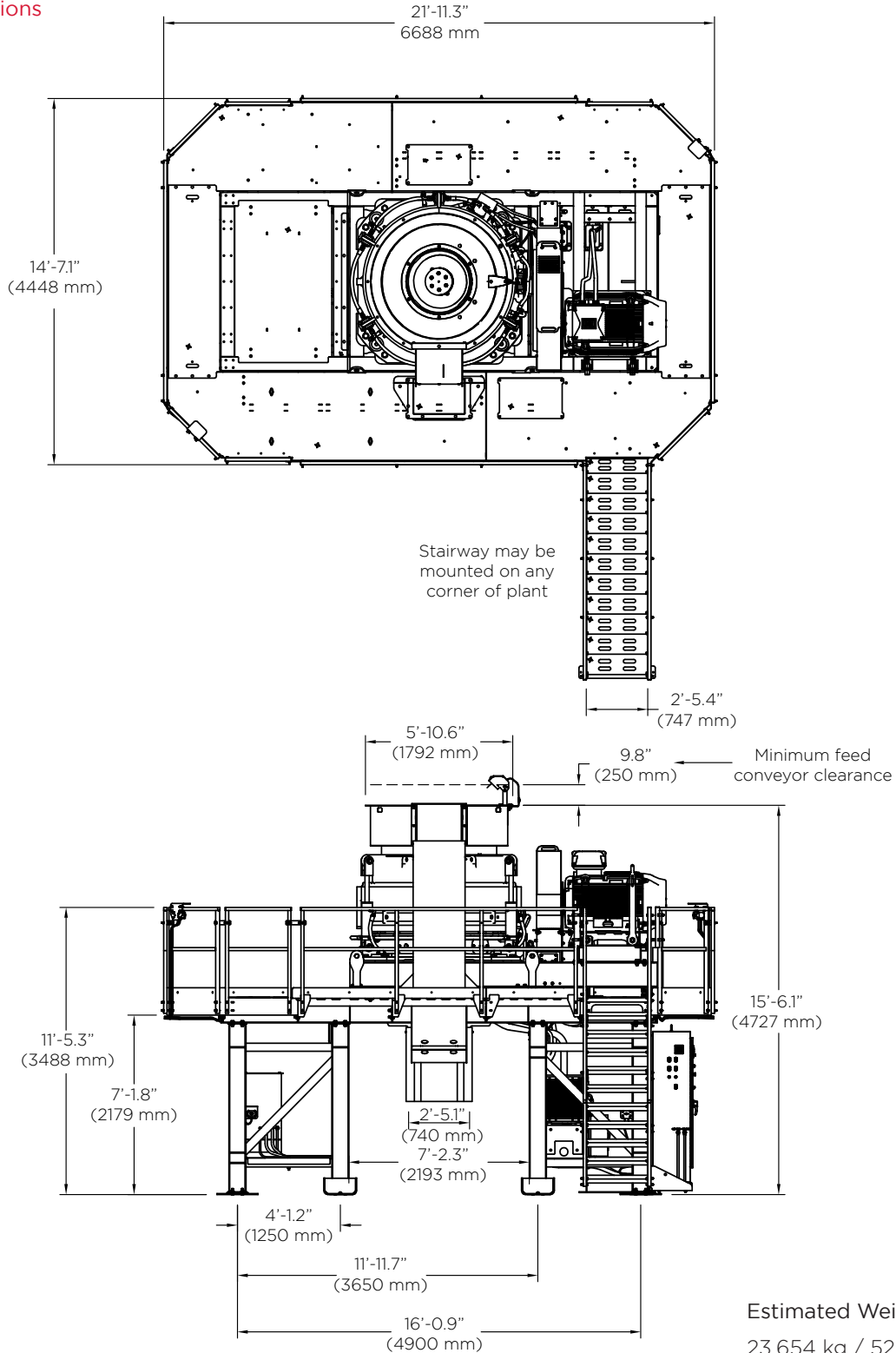
Maximum Feed Size

Extra Course Configuration	220 mm	8.7"
Medium Course Configuration	190 mm	7.5"
Fine Configuration	110 mm	4.3"

Minimum Recommended CSS

Extra Course Configuration	25 mm	1.0"
Medium Course Configuration	18 mm	0.71"
Fine Configuration	12 mm	0.47"

Working Dimensions



www.terexmps.com

December 2020. Product specifications and prices are subject to change without notice or obligation. The photographs and/or drawings in this document are for illustrative purposes only. Refer to the appropriate Operator's Manual for instructions on the proper use of this equipment.

Failure to follow the appropriate Operator's Manual when using our equipment or failure to act responsibly may result in serious injury or death.

The only warranty applicable to our equipment is the standard written warranty applicable to the particular product and sale, and Terex makes no other warranty, express or implied. Terex, the Terex Crown design, Cedarapids, Canica, Simplicity, Jaques, El-Jay and Rollercone are trademarks of Terex Corporation or its subsidiaries. All rights are reserved. © 2020

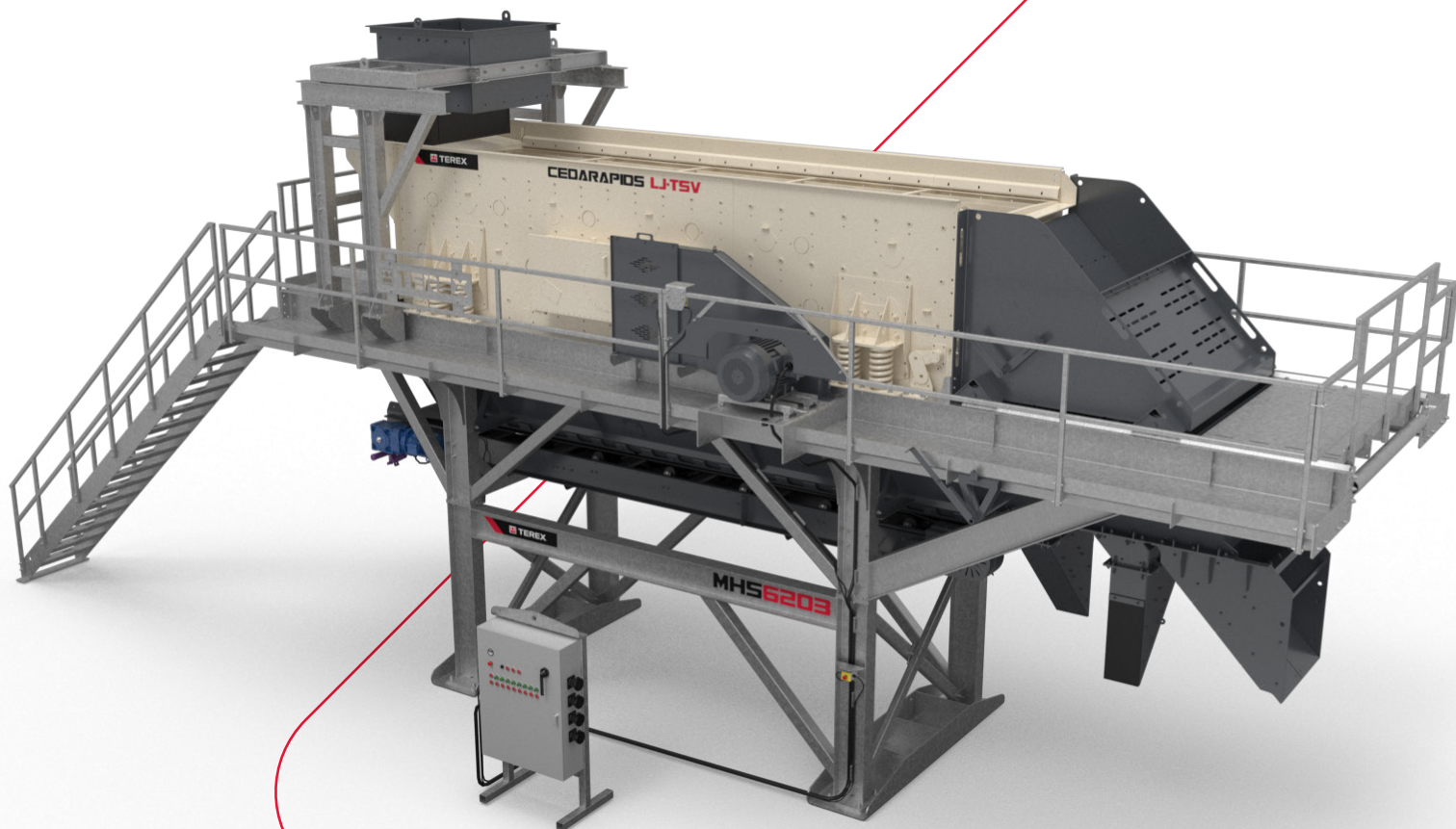


CEDARAPIDS®
A TEREX BRAND

Modular Plants

MHS6203

Screen Module



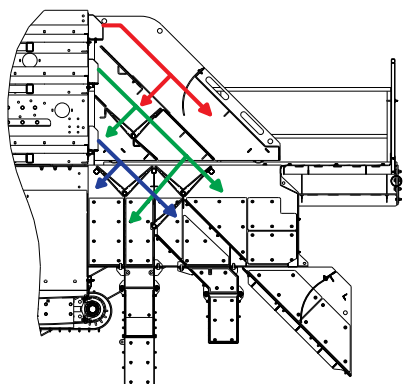
A world working better™

 **TEREX®** MPS

Cedarapids® Modular Plants

MHS6203 Screen Module

The MHS6203 modular horizontal screen features the extremely efficient Cedarapids® LJ-TSV screen with its legendary ElJay® oval stroke action. Set-up time and ease of operation is aided by the simplicity of the modular product range. All of our modular crushers and modular screens bolt together on site and require minimal on-site wiring. Designed with logistics in mind, the MHS6203 module ships in two 40' shipping containers plus the screen.



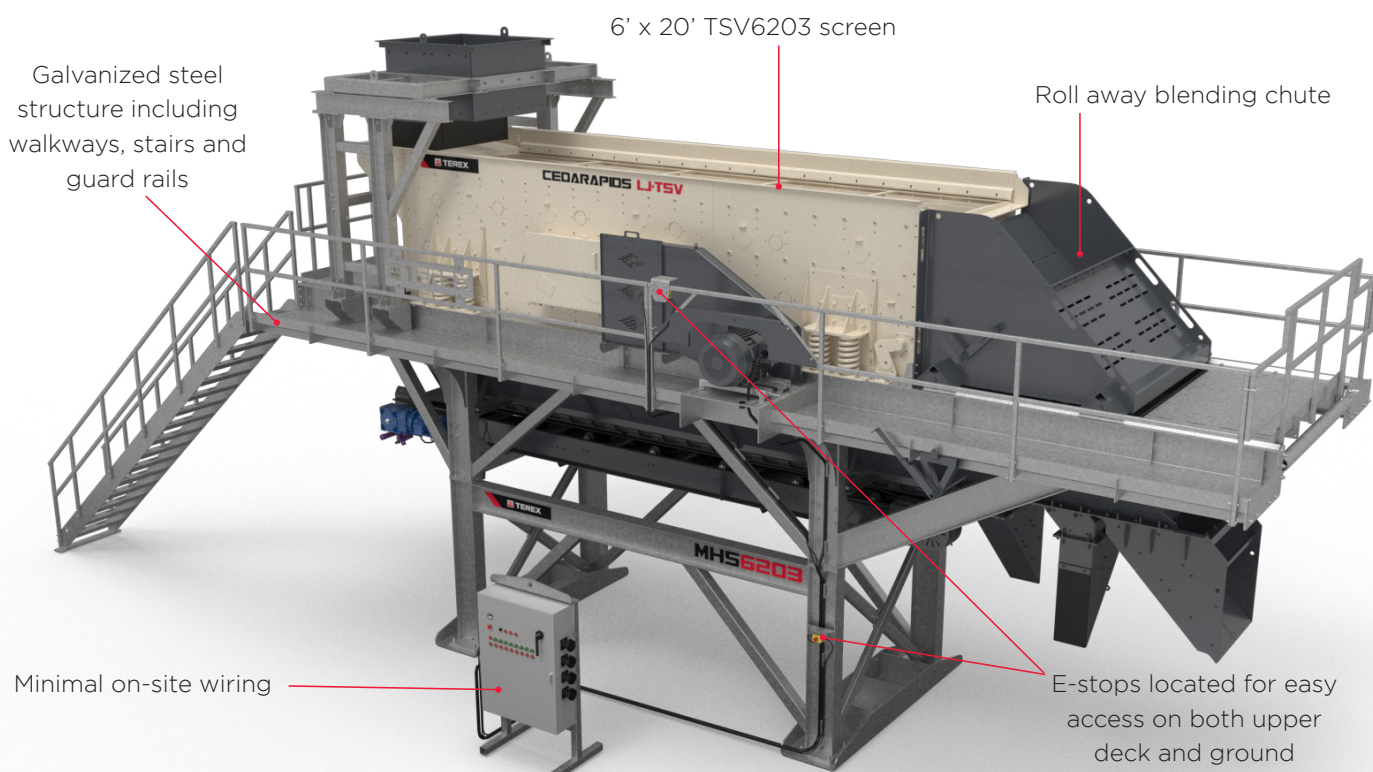
Standard Features

Module Structure

- Bolts together on site, quick set-up time with basic tools
- Minimal on-site wiring
- Robust weather-protected control panel with user-friendly controls
- Galvanized steel structure including walkways, stairs and guard rails
- Extra-heavy-duty I-beam frame with rigid diagonal truss construction
- Integrated rolling chute mechanism and integrated trouser leg chutes
- CE compliant module structure and components
- Systematically packed in shipping containers for quick site setup and easy transport

Blending Chutes

- 4-section (25%) blending gate system for all decks
- 2-section (25%) blending gates for bottom deck
- Deck product combinations: top-center; center-bottom; bottom-fines; center up to top; bottom up to center
- Heavy-duty AR 400 liners on impact surfaces
- Flop gates are made from AR 400 steel



*Shown with optional electrical switchgear panel and mounting feet

Cedarapids LJ-TSV Horizontal Screen

- 6' x 20' (1828mm x 6096mm) 3-deck LJ-TSV6203-32 horizontal screen with El-Jay™ oval stroke design
- Three-shaft vibrator mechanism with adjustable stroke angle, stroke length, and speed
- 25% thicker 5/16" (8 mm) grade 50 high strength steel side plates
- Heavy-duty fully braced single crown steel deck construction
- Exclusive patented and patent-pending features for durability and easy maintenance:
 - Low maintenance vibration damper system
 - "Flow-through" bearing lubrication
 - Baffle splash lubrication system
 - Double O-ring sealed for life vibrator construction
- Spherical washer design eliminates sidewall welds
- Huck-bolted screen box construction (no welds)
- Extended life coil spring suspension
- Replaceable bolt-on spring guides
- Gland type non-wearing shaft seal
- Tool-less oil level sight glasses

Underscreen Conveyor

- 36" (900mm) fully skirted underscreen fines conveyor
- 10 hp (7.5kW) electric motor, vulcanized 2-ply belt
- Direct drive motor and gearbox
- Easy access belt take-ups
- High performance belt wiper

Specifications	Imperial	Metric
Screen Size	6' x 20'	1828 x 6096 mm
Screen Motor	40 hp	30 kW
Underscreen Conveyor Width	36"	900 mm
Underscreen Conveyor Motor	10 hp	7.5 kW
Estimated Module Weight	48,500 lbs	22,000 kg

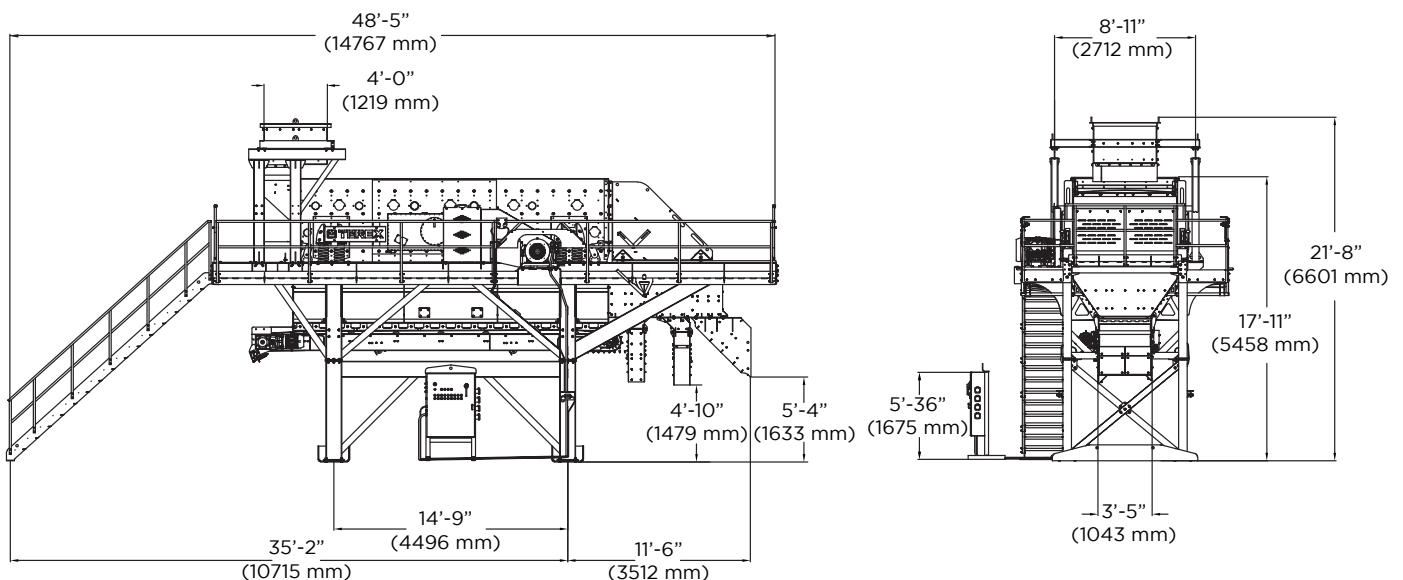
Power Panel

- Electric power panel for screen and on-plant collection conveyor

Optional equipment

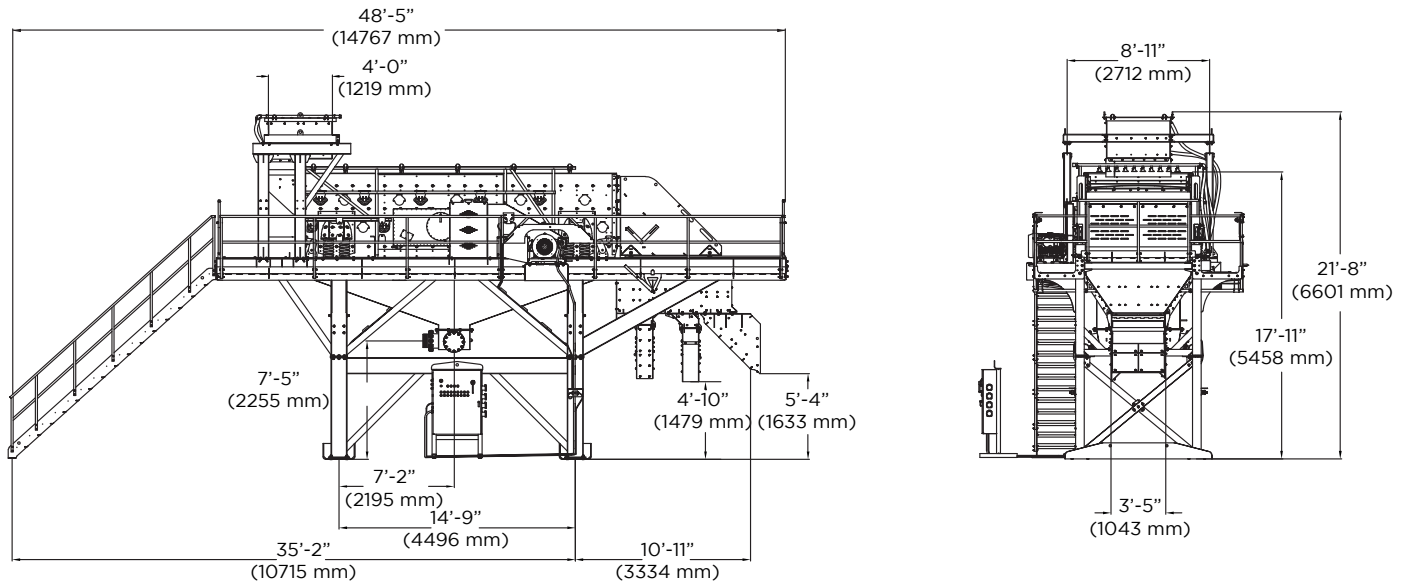
- Mounting feet for easy setup at site without concrete pads (full length skid bases also available)
- Electrical switchgear panel
- Off module conveyor starter kit for off-plant feed conveyor and four off-plant product conveyors
- Feed Box and Support Structure for Dry Screening - Rock Box Style material feed box allows for the conveyor to feed from either side or over the back of the screen
- Wash Plant Option - Feed Box with two spray bars and support structure, screen spray system with manifold and under screen flume

Working Dimensions

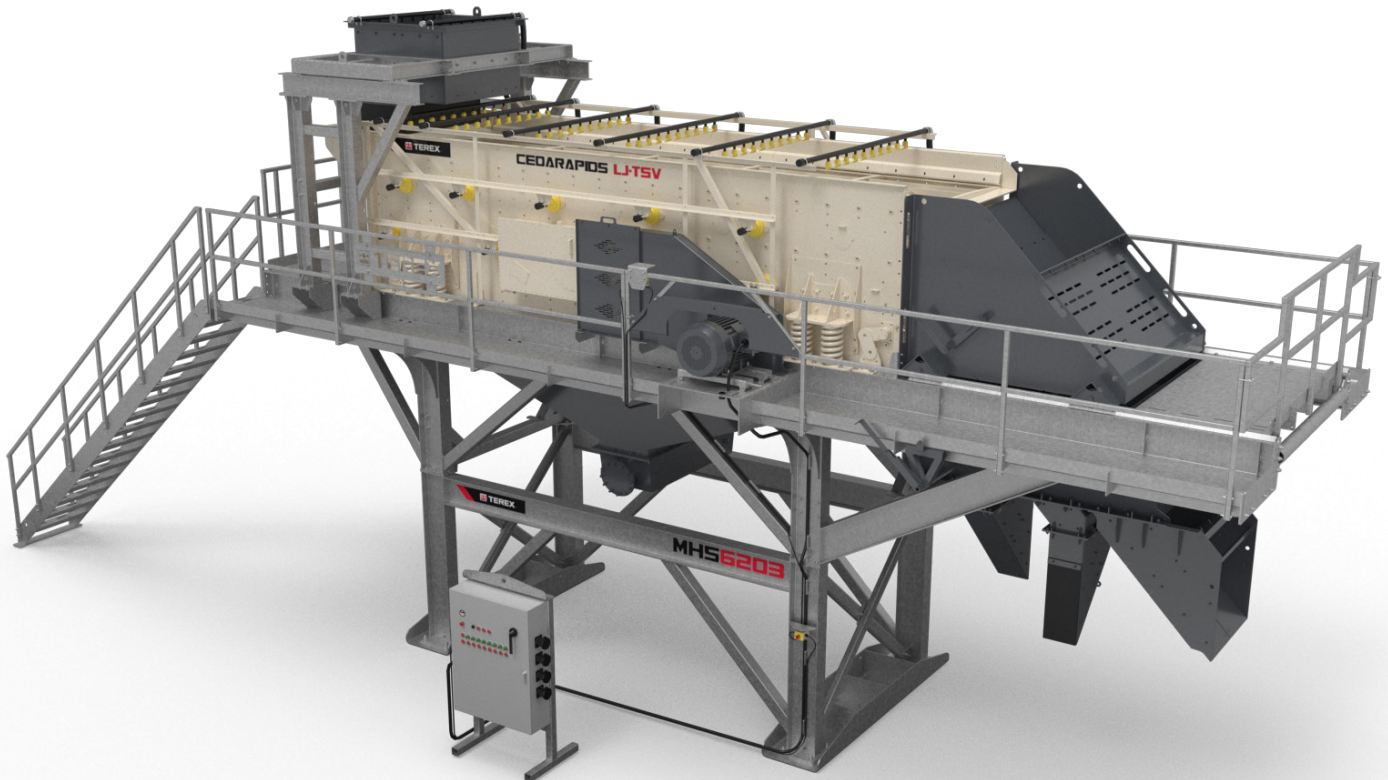


Shown with optional switchgear, mounting feet and feed box.

Working Dimensions - Wash Option



Shown with optional switchgear and mounting feet.



www.terexmps.com
mpsmarketing@terex.com

Product specifications and prices are subject to change without notice or obligation. The photographs and/or drawings in this document are for illustrative purposes only. Refer to the appropriate Operator's Manual for instructions on the proper use of this equipment.

Failure to follow the appropriate Operator's Manual when using our equipment or failure to act responsibly may result in serious injury or death.

The only warranty applicable to our equipment is the standard written warranty applicable to the particular product and sale, and Terex makes no other warranty, express or implied. Terex, the Terex Crown design, Cedarapids, Canica, Simplicity, Jaques, El-Jay and Rollercone are trademarks of Terex Corporation or its subsidiaries. All rights are reserved. © August 2020